



## Antico braciere in ottone.

COD. 379996

Period: Seconda metà dell'Ottocento

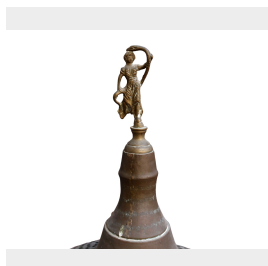
Bel braciere in ottone a tre zampe, con delle decorazioni a traforo, coperchio con puntale di figura femminile che sorregge un serpente.

MISURE: DIAM 48 - H 91

Category: **Fireplaces & Accessories**

Subcategory: **Accessories**

Tags: **Bracieri, Ottone**



### Legend

L – WIDTH / LE – EXTERNAL WIDTH / LI – INSIDE WIDTH / H – HEIGHT / HE – OUTSIDE HEIGHT / HI – INTERNAL HEIGHT / P – DEPTH / SP – THICKNESS / Diam – DIAMETER / Diam E – OUTSIDE DIAMETER / Diam I – INTERNAL DIAMETER / NR. – NUMBER-QUANTITY / PZ. – PIECES / Unit of measure centimetres (cm)